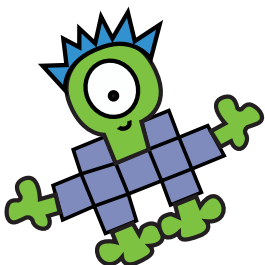
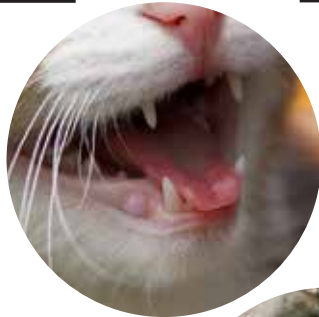
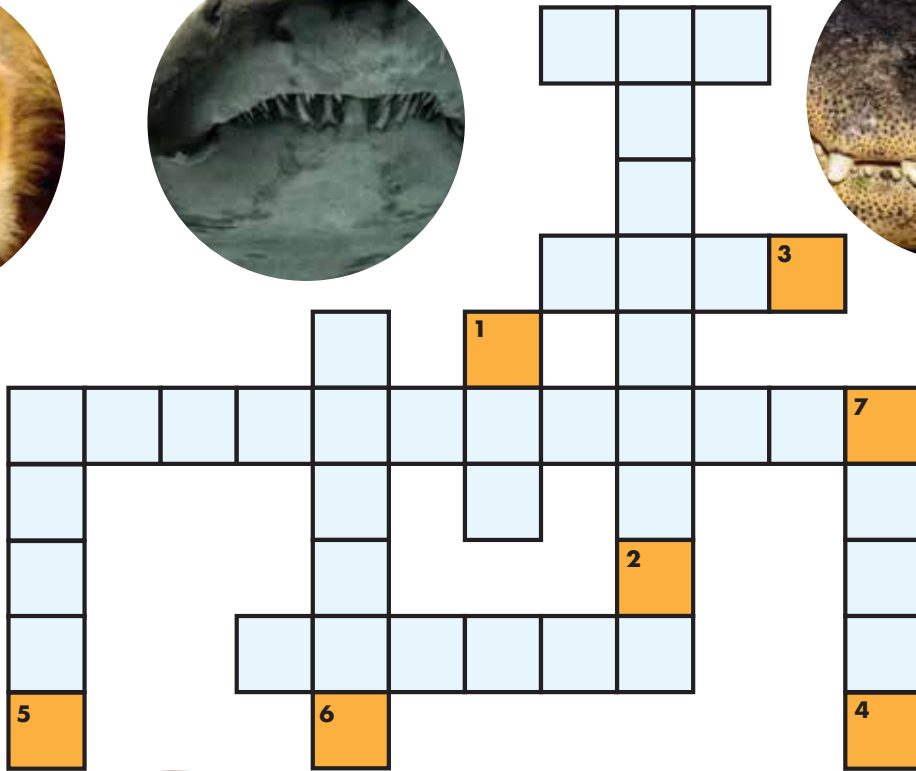


Palo Alto Puzzle Hunt

1

Chris is meeting his pals at a local park, one of the many wonderful parks in Palo Alto. They are going to explore the trails. They are hoping to see fun animals along the way, probably not the ones below. Enter the puzzle's answer on www.solvingfun.com/paloalto. A correct answer will tell you where to find a clue. Get all the clues from this week's puzzles to put together for this week's answer. At the end of the hunt, combine all your answers to get one last, final location.



Chris Cross



© Solvingfun, LLC 2025